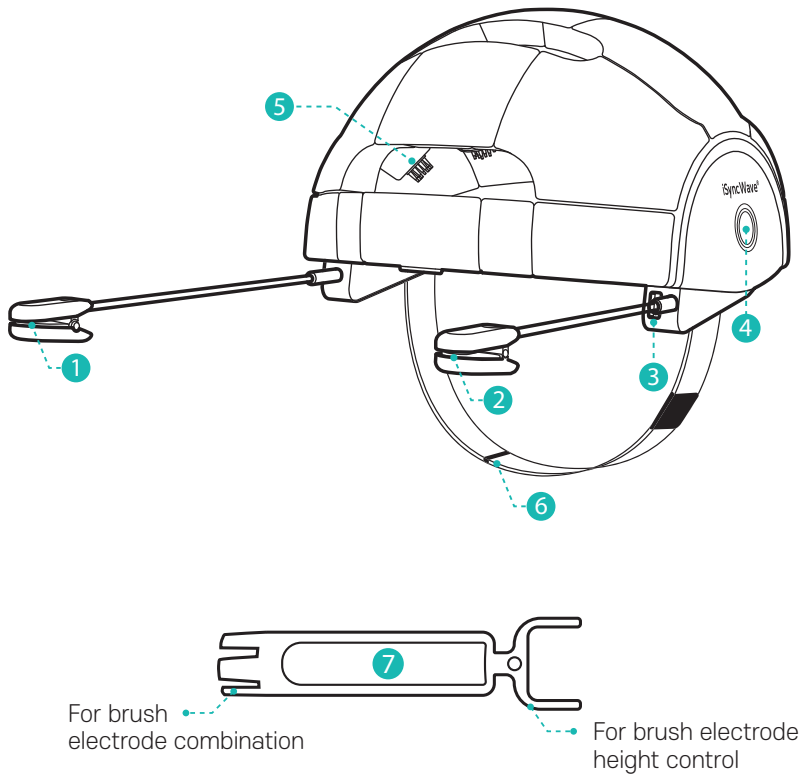


iSyncWave™

Manual for quick start

Names for each part of the product



Names for each part of the product

- ① **REF electrode** Reference electrode sensor for measuring the brain wave
- ② **PPG sensor** Light sensor for measuring the pulse
- ③ **USB Connector for charging** USB C Connector terminal
- ④ **Power Button**

Function	Operation	LED	State
Power On	Pushing for more than two seconds	On	Green: more than 30% Magenta: less than 30%
*When the battery is less than 10%, charging pops up at the app.			
Charging	USB-C connection	On	Green: 100% Magenta: less than 100%
Measurement		Off	
Power Off	Pushing for more than two seconds	Off	

- ⑤ **Electrode** electrode for measuring the brain wave
- ⑥ **Chin strap** strap for fixing and stabilizing iSyncWave
- ⑦ **Tool for replacing the electrode**
a tool to replace brush electrode or to control the height

※ The product shape can be changed to improve the quality without notice.

STEP 1 Preparation before the test and how to wear

1



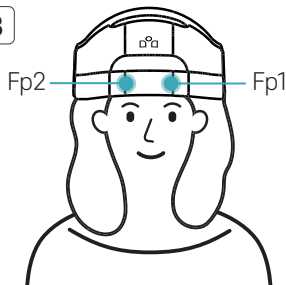
Remove all accessories before the test.

2



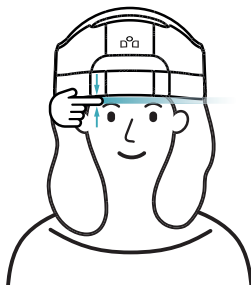
Clean the forehead and earlobes before the test.
(recommended)

3



Place Fp1, Fp2 electrodes to your forehead and equip the device as if you are combing your hair from front to the backside.

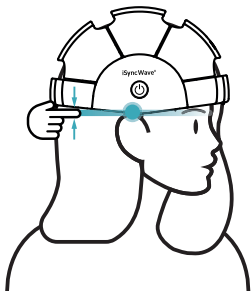
4



Look straight ahead when equipped with the device.
Check if the distance between your eyebrow and the device is approximately one finger(1cm) away.

STEP 1 Preparation before the test and how to wear

5



Check if the T3, T4 electrodes are in one finger (1cm) distance above your earlap.

6

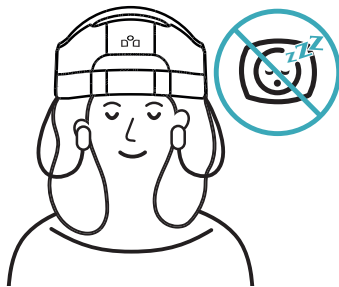


Attach the sensors to each earlobe for the measurement then adjust the chin strap.

Recommended posture before measuring the brain wave / warning



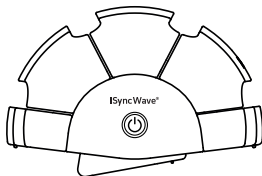
Sit down comfortably, not making your neck stiff.



Be careful not to sleep during the measurement.

STEP 2 How to start APP before the test

1



2



3



iSyncWave ON

Push the power button to start iSyncWave. (It becomes blue and changes colors depending on the charging state.)

Starting APP

Touch iSyncWave / iSyncMe App on a tablet to show the initial page.

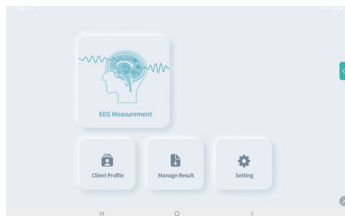
▶ You can download it at google play store.

Log in

Log in by inputting ID and Password.

STEP 2 How to start APP before the test

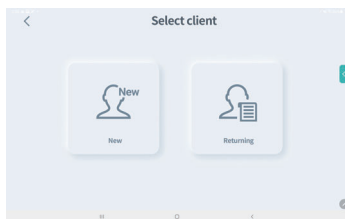
4



Selecting brain wave measurement

Select brain wave measurement.

5



Selecting a client

Select new client or registered client at the menu.

6

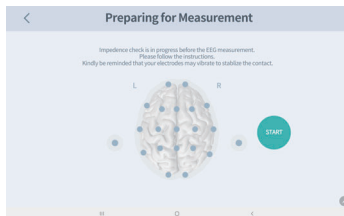


App & Device connection

Select the Bluetooth icon and connect to a device.
(If it is not connected to a device, select reinitialization and push the renewal button on the upper right area to connect to the device.)

STEP 3 Measuring impedance before the test

1



Test preparation 1

Push the START button to measure the impedance before starting the brain wave test.

2



Test preparation 2

You can select vibration or slightly press the upside of electrode to reduce the impedance.

- All green - Select Complete button.
- Red - Select Vibration button.
- Yellow - Select Vibration button.

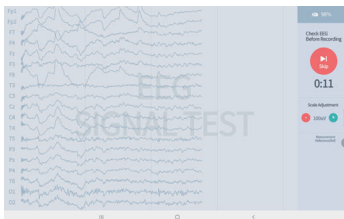
3



Test preparation 3

If the impedance is stabilized, push the Complete button. (If you push the Complete button when there is no red color, you can get the optimal signal.)

4

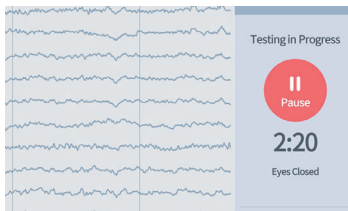


Confirming the signal state

Before measuring the brain wave EEG Signal TEST / PPG Signal TEST check the signal quality.

STEP 4 Measuring the brain wave

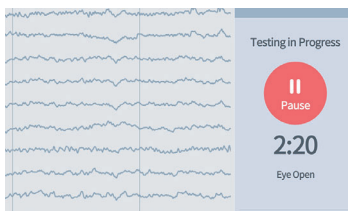
1



Measurement condition: (Eye Closed)

Close your eyes and start the measurement for time set. (You can change the time. You should measure it for more than 2.5 minutes to get optimal quality.)

2

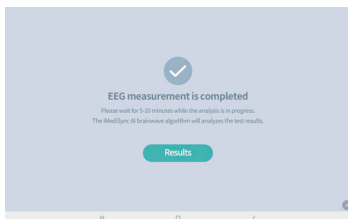


Measurement condition: (Eye Open)

Open your eyes and start the measurement for time set. (You can change the time or omit this measurement condition. If you want, It is recommended to measure it for more than 2.5 minutes.)

※ HRV result requires more than 5 minutes to get optimal quality. Recommended time set: 2.5min EC + 2.5min EO

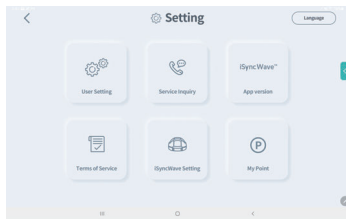
3



Completing the measurement

When EEG measurement is complete, the data is automatically uploaded to AI brain wave analysis platform iSyncBrain®. It takes about 5 minutes for the result analysis. (Check the measurement result at the 'Manage Result' of the main page of the application.)

Setting menu



User setting / Service inquiry /
App version information / Terms of
service / iSyncWave setting /
My point






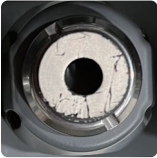


Setting the time for the state of
eyes closed / setting the time for
the state of eyes open /
setting the repetition time

How to wash

- Clean the surface of the equipment with alcohol swap.
- Clean the electrodes with a brush of isopropyl alcohol.
- ※ Don't put the main body of the equipment into water.
- ※ Don't pour water over it for cleansing.

Reference for electrodes replacement

Conditions and status

condition	Brush	Flat	explanation
Excellent			Brush : The electrode coating is intact Flat : The electrode coating is intact
			Brush : Less than two electrode coatings are peeled off Flat : 1/3 of electrode coatings are peeled off
Replacement suggested			Brush : More than three electrode coatings are peeled off Flat : More than 1/3 of the electrode coatings are peeled off

Reference for electrodes replacement

Precautions when using iSyncWave

1. After performing two hundred or more EEG Measurements, check the condition of the electrode for possible replacement.
 - The average electrode peeling off begins from 180 to 220 EEG Measurements.
2. Clean the electrode thoroughly each time after using iSyncWave.
 - The electrode should be gently cleaned with a soft cloth or brush moistened with isopropyl alcohol.
 - If the electrode is not cleaned properly, it may cause premature electrode peel-off.
3. Use electrodes purchased from iMediSync only to maintain product quality and specifications.
4. Using the same disinfected electrodes may lead to premature electrode wear.

After Service

Please check the followings before asking A/S

- For situations not described above, please restart your device to try again.
- If it has the same symptom even after turning off and turning on, please contact our client support center.
- You can contact both the shop you purchased it from and our client support center for A/S.
- The iSyncWave product warranty is for one year from the purchase date. However, if the product has been damaged or broken for a reason other than the natural cause, (disassembling of the product, custom modification, Etc) it will not be compensated by our warranty. The warranty does not include replacement of consumables (electrodes, Etc).

※ This warranty guarantees free repair under the condition of the period described here. It doesn't restrict your legal rights. If you have any questions about the repair after the warranty period, you can contact the shop you purchased it from and our client support center.

Warranty

Product name:

Model name:

Product number(S/N):

Purchasing date:

Purchasing place:

Guaranteed period: one year from the purchasing date

Customer information: (company name)

(name)

(contact number)

This product was released after strict quality management and passed a general test.

Manufacturing request and seller: iMediSync Inc.

Head office: iMediSync, 3rd floor, 175, Yeoksam-ro, Gangnam-gu, Seoul

Client support center (A/S): 1533-4080

